



"BELLEVUE" TUNIC

designed by Teresa Chorzepa



SIZES Small (**Medium**, Large, X-Large)

KNITTED MEASUREMENTS

Bust 34 (**36**, 38, **42**)/86.5 (**91.5**, 96.5, **106.5**) cm

Length 30 (**30½**, 31, **31½**)/76 (**77.5**, 78.5, **80**) cm

MATERIALS

• 9 (**10**, 11, **12**) balls Tahki Yarns **RAIN** 70% viscose, 30% linen (1.75oz/50g; 87yds/80m) in **color #06 lavender**

• One pair size 7 (4.5mm) needles

OR SIZE TO OBTAIN GAUGE

- Size 6 (4mm) circular needle, 16"/40 cm, for Trim
- Stitch markers
- Yarn needle

GAUGES

16 sts and 27 rows = 4"/10 cm in Pattern I using larger needles

18 sts and 27 rows = 4"/10 cm in Pattern II using larger needles

TAKE TIME TO CHECK GAUGES

SPECIAL TERMS

K2tog: Knit 2 together (dec) – Knit 2 sts together through the front loops.

Ssk [or ssp]: Slip, slip, knit [or purl] (dec) – Slip 2 sts, one at a time **KNITWISE** to RH needle, return the sts to LH needle in the turned position and knit [or purl] them together through the back loops.

SK2P: (2 sts dec) Slip 1, knit 2 sts tog, pssso.

PATTERN STITCHES

Stockinette stitch (St st)

[Rows] Knit on RS, purl on WS.

[Rounds] Knit every round.

Pattern I (multiple of 11 sts)

Row 1 (RS) *Yo, ssk, k9; rep from * across.

Row 2 and All WS Rows Purl.

Row 3 *K1, yo, ssk, k8; rep from * across.

Row 5 *K2, yo, ssk, k4, k2tog, yo, k1; rep from * across.

Row 7 *K3, yo, ssk, k2, k2tog, yo, k2; rep from * across.

Row 9 *K6, k2tog, yo, k3; rep from * across.

Row 11 *K5, k2tog, yo, k4; rep from * across.

Row 12 Purl.

Repeat Rows 1-12 for Pattern I.

Pattern II (multiple of 11 sts)

Row 1 (RS) *K3, k2tog, yo, k6; rep from * across.

Row 2 and All WS Rows Purl.

Row 3 *K2, k2tog, yo, k1, yo, ssk, k4; rep from * across.

Rows 5, 7 and 9 Knit.

Row 10 Purl.

Repeat Rows 1-10 for Pattern II.

BACK

With larger needles, cast on 102 (**106**, 113, **120**) sts.

Begin Pattern I

Row 1 (RS) K2 (**4**, 2, **5**), beg with Row 1, work in Pattern I to last 1 (**3**, 1, **5**) sts, k1 (**3**, 1, **5**).

Keeping first and last sts in St st, rep Rows 1-12 of Pattern I for 6 times, dec 1 st each side every 10th row 7 times – 88 (**92**, 99, **106**) sts rem.

Working in St st, dec 6 sts evenly spaced every other row twice – 76 (**80**, 87, **94**) sts rem.

Work 4 more rows, end with a WS row.

Begin Pattern II

Row 1 (RS) K6 (3, 6, 4), beg with Row 1, work in Pattern II to last 4 (0, 4, 2) sts, k4 (0, 4, 2).

Keeping first and last sts in St st, rep Rows 1-10 of Pattern II, dec 1 st each side every 10th row twice – 72 (76, 83, 90) sts rem.

Work even until piece measures 17" from beg, end with a WS row.

Inc 1 st each side every 10th row twice – 76 (80, 87, 94) sts.

Work even until piece measures 22" from beg, end with a WS row.

Shape Armholes

Bind off 5 sts at beg of next 2 rows, then 3 sts at beg of next 2 rows – 60 (64, 71, 78) sts rem.

Dec 1 st each side every other row 4 times – 52 (56, 63, 70) sts rem.

Work until Armholes measure 6½ (7, 7½, 8)", end with a WS row.

Shape Neck

Mark center 14 (14, 17, 18) sts.

Next Row (RS) Work to marked center 14 (14, 17, 18) sts, join second ball of yarn and bind off 14 (14, 17, 18) sts, work to end of row – 19 (21, 23, 26) sts each side.

Working both sides at same time with separate balls of yarn, bind off 5 sts from each Neck edge once, 2 sts twice, dec 1 st each Neck edge twice – 8 (10, 12, 15) sts rem each side.

Work until Armholes measure 8 (8½, 9, 9½)", end with a WS row. Bind off.

FRONT

Work as for BACK until Armholes measure 1½ (2, 2½, 3)", end with a WS row.

Shape Neck

Mark center 12 (12, 15, 16) sts.

Next Row (RS) Work to marked center 12 (12, 15, 16) sts, join second ball of yarn and bind off 12 (12, 15, 16) sts, work to end of row – 20 (22, 24, 27) sts each side.

Working both sides at same time with separate balls of yarn, bind off 4 sts from each Neck edge once, 2 sts twice, dec 1 st each Neck edge 4 times – 8 (10, 12, 15) sts rem each side.

Work until Armholes measure 8 (8½, 9, 9½)", end with a WS row. Bind off.

FINISHING

Block pieces to measurements. Sew Shoulder seams. Sew side seams.

Neck Trim

With RS facing and smaller circular needle, join yarn at Shoulder seam and pick up and knit 105 (105, 111, 111) sts evenly around Neck edge. Join to work in rnds, pm for beg of rnd.

Knit 1 rnd.

Next Row (RS) *Yo, SK2P; rep from * around.

Knit 1 rnd. Bind off.

Armhole Trim

With RS facing and smaller circular needle, join yarn at side edge and pick up and knit 93 (96, 99, 102) sts evenly around Armhole edge. Join to work in rnds, pm for beg of rnd.

Knit 1 rnd.

Next Row (RS) *Yo, SK2P; rep from * around.

Knit 1 rnd.

Bind off. Weave in ends.

ABBREVIATIONS

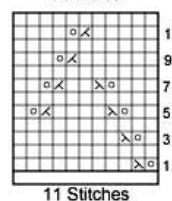
beg	begin(ning)
dec	decrease(d)(s)(ing)
inc	increase(d)(s)(ing)
k	knit
LH	left hand
p	purl
pm (Pm)	place marker
psso	pass slipped stitch over
rem	remain(s)(ing)
rep	repeat(s)(ing)
RH	right hand
rnd(s)	round(s)
RS	right side
st(s)	stitch(es)
WS	wrong side
yo	yarn over

TER-J Bellevue Tunic

Stitch Key

□	= K on RS, p on WS
⊗	= K2tog
⊗	= Ssk
⊙	= Yo

Pattern I



Pattern II

